



GREENHILL



Greenfields South Drive
Cuffley, Potters Bar, EN6 4HW
Asking price £375,000



Greenfields South Drive, Cuffley, Potters Bar, EN6 4HW

75% SHARE

This charming two-bedroom detached modern retirement bungalow is available on a shared ownership basis with a 75% share and is ideal for those looking to downsize or enjoy a peaceful and secure retirement in the highly sought-after village of Cuffley. Situated within a warden-controlled development, the property offers the perfect blend of independence and reassurance, with pull cords in every room connecting to a central response team for added peace of mind.



Step Inside:

Step Outside:

Location:

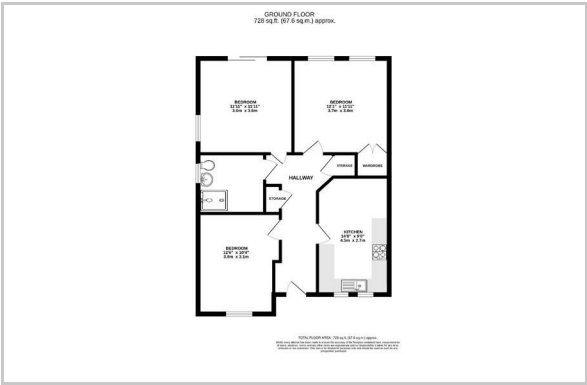
Agents Note:



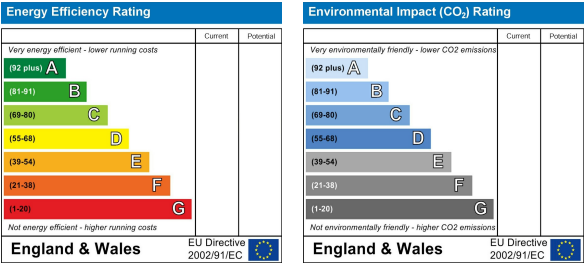
Area Map



Floor Plan



Energy Efficiency Graph



These particulars, whilst believed to be accurate are set out as a general outline only for guidance and do not constitute any part of an offer or contract. Intending purchasers should not rely on them as statements of representation of fact, but must satisfy themselves by inspection or otherwise as to their accuracy. No person in this firms employment has the authority to make or give any representation or warranty in respect of the property.